

# 0. Dance to the Fiddle, March to the Fife

Instrumental Folk Tunes in Pennsylvania

ed. Samuel P. Bayard

Samuel P. Bayard

"Then the drums did beat and rattle,

And the fife did sweetly play;

She arched up to the enemy

And bravely fought away.

And bravely fought away.

The fiddler being willing,

And his arm a-being strong,

He played "The Drownded Irishman"

For four hours along.

(From Pennsylvania Folksong Versions)

Google summary:

Dance to the Fiddle, March to the Fife: Instrumental Folk Tunes in Pennsylvania by Samuel P. Bayard was published in 1981 (sometimes cited as 1982). This book compiles hundreds of instrumental folk tunes, primarily fiddle and fife tunes, collected in southwestern Pennsylvania and parts of West Virginia starting in the 1920s.

## 17001. NEIL GOW'S RANT (V)

Meighen, V, 1930s, B.

Musical score for Neil Gow's Rant (V) in G major, 2/4 time. The score consists of six staves of music. The first staff begins with a treble clef, a key signature of one sharp (F#), and a common time signature. The music is marked with 'A' and includes repeat signs. The second staff is marked 'A.....' and 'B B...'. The third staff is marked 'B...' and 'C'. The fourth staff is marked 'C.....' and 'D'. The fifth staff is marked 'E' and 'D... D...'. The sixth staff is marked 'Var. A B C D' and includes a 3/4 time signature change.

## 17002. MILLGOW'S REEL (V)

Strosnider, V, 1928, B.

Musical score for Millgow's Reel (V) in G major, 2/4 time. The score consists of four staves of music. The first staff begins with a treble clef, a key signature of one sharp (F#), and a common time signature. The music is marked with 'A... Quicker Repeat ad lib.'. The second staff is marked 'B... Repeat ad lib.'. The third staff is marked 'C.... D.C. Var. A B C'. The fourth staff includes a 2/4 time signature change.

**18003. The CORN-HUSKERS**

(Phillips, V, 1930s, B.)

Musical score for '18003. The CORN-HUSKERS' in 4/4 time, key of D major. The score consists of three staves. The first staff is the melody, starting with a quarter rest followed by a series of eighth and quarter notes. The second and third staves provide harmonic accompaniment with chords and moving lines.

**18003. The Corn Huskers (V)**

(Phillips, V, 1930s, B.)

Musical score for '18003. The Corn Huskers (V)' in 4/4 time, key of D major. The score consists of three staves. The first staff is the melody, which includes a repeat sign. The second and third staves provide harmonic accompaniment.

**18004. Square Dance Tune**

(James Taylor, V, 1930s, B.)

Musical score for '18004. Square Dance Tune' in 4/4 time, key of D major. The score consists of three staves. The first staff is the melody, featuring a series of eighth and quarter notes. The second and third staves provide harmonic accompaniment.

**19005. OLD DANCE TUNE (V)**

(J. White, V, 1930s, B.)

Musical score for '19005. OLD DANCE TUNE (V)' in 4/4 time, key of D major. The score consists of two staves. The first staff is the melody, which includes a repeat sign and a fermata. The second staff provides harmonic accompaniment with first and second endings marked with '1' and '2'.

## 19006. The TURKEY-EGG (V)

(James Taylor, V, 1930s, B.)

A...  
B...

Var. A

A rhyme accompanying the tune runs:

Ben stole the turkey-egg,  
run around the medder with it,  
Threw it in the creek,  
and swore he never meddled with it.

## 19007. KATIE WITH THE BUCKLES (V)

(H. White, V, 1930s, B.)

This rhyme was associated with the tune:

Long folks, short folks, have ye heerd the news?  
I'm goin'to marry Katie with the buckles on her showes.  
Ha! Ho! Never could refuse--  
I'm goin'to marry Katie with the buckles on her showes.

## 20008. SQUARE DANCE (V)

(Losch, V, 1930s, B.)

A....  
Var. A

**2009. JIG (V)**

(Losch, V, 1930s, B.)

Musical score for '2009. JIG (V)' in 4/4 time, key of G major. The score consists of four staves of music. The first staff begins with a treble clef and a key signature of one sharp (F#). The music is a lively jig with a mix of eighth and sixteenth notes. The second staff continues the melody. The third staff features a more complex rhythmic pattern with some rests. The fourth staff concludes the piece with a final cadence.

If this is a "jig," it must be one of the so-called "straight jigs" like those in the blackface minstrel shows. The second part is also that of the well-known Soldier's Joy tune (No. 332).

**2010. The HORSE CALLED ROVER**

Or ROOSTER IN THE STRAWPILE (V)

(H. White, V, 1930s, B.)

Musical score for '2010. The HORSE CALLED ROVER' in 4/4 time, key of G major. The score consists of three staves. The first staff is marked with 'A...' and 'B...' above it. The second staff is marked with 'B...' above it. The third staff is marked with 'Var. A' and 'B' above it. The music is a lively jig with a mix of eighth and sixteenth notes. The first staff begins with a treble clef and a key signature of one sharp (F#). The music is a lively jig with a mix of eighth and sixteenth notes. The second staff continues the melody. The third staff features a more complex rhythmic pattern with some rests.

**2010. The HORSE CALLED ROVER**

Or ROOSTER IN THE STRAWPILE (V)

(H. White, V, 1930s, B.)

Musical score for '2010. The HORSE CALLED ROVER' in 4/4 time, key of G major. The score consists of three staves. The first staff is marked with 'A...' and 'B...' above it. The second staff is marked with 'B...' above it. The third staff is marked with 'Var. A' and 'B' above it. The music is a lively jig with a mix of eighth and sixteenth notes. The first staff begins with a treble clef and a key signature of one sharp (F#). The music is a lively jig with a mix of eighth and sixteenth notes. The second staff continues the melody. The third staff features a more complex rhythmic pattern with some rests.

**21011. OLD AIR (V)**

(H. White, V, 1930s, B.)

Musical score for '21011. OLD AIR (V)'. The score consists of four staves of music in 4/4 time, with a key signature of one flat (B-flat). The melody features several triplet markings (indicated by a '3' above the notes) and a 3/4 time signature change in the second measure of the first staff. The piece concludes with a double bar line.

**21012. COONEY IN THE STUBBLE FIELD (V)**

(H. White, V, 1930s, B.)

Musical score for '21012. COONEY IN THE STUBBLE FIELD (V)'. The score consists of three staves of music in 4/4 time, with a key signature of three sharps (F#, C#, G#). The melody includes a section marked 'A...' and a variation labeled 'Var. A'. The piece concludes with a double bar line.

**21012. COONEY IN THE STUBBLE FIELD (V)**

(H. White, V, 1930s, B.)

Musical score for '21012. COONEY IN THE STUBBLE FIELD (V)'. The score consists of three staves of music in 4/4 time, with a key signature of one sharp (F#). The melody includes a section marked 'C...' and a variation labeled 'Var. c'. The piece concludes with a double bar line.

**22013. REEL (V)**

(H. White, V, 1930s, B.)

Musical score for '22013. REEL (V)'. The score consists of three staves of music in 4/4 time, with a key signature of three sharps (F#, C#, G#). The melody includes a section marked '1' and a variation labeled 'V'. The piece concludes with a double bar line.

## 22013. REEL (V)

(H. White, V, 1930s, B.)

Musical score for 22013. REEL (V) in G major, 4/4 time. The score consists of three staves. The first staff contains the main melody with first and second endings. The second and third staves provide accompaniment. The piece concludes with a double bar line and repeat dots.

## 22014. ALL THE GALS IS GONE AWAY (V)

(H. White V, 1930s, B.)

Musical score for 22014. ALL THE GALS IS GONE AWAY (V) in B-flat major, 2/4 time. The score consists of two staves. The first staff contains the main melody with triplet markings. The second staff provides accompaniment. The piece concludes with a double bar line and repeat dots.

With the tune goes this rhyme:

All the gals is gone away  
 Down to the straw-pile ready for play.  
 All the gals is gone away  
 Fetch them back and make them stay.

## 23015. OLD DANCE TUNE (V)

(Strosnider, V, 1930s, B.)

Musical score for 23015. OLD DANCE TUNE (V) in G major, 4/4 time. The score consists of two staves. The first staff contains the main melody with first and second endings. The second staff provides accompaniment. The piece concludes with a double bar line and repeat dots.

## 23016. CHASE THE SQUIRREL (V)

(Strosnider, V, 1930s, B.)

Musical score for 23016. CHASE THE SQUIRREL (V) in G major, 4/4 time. The score consists of three staves. The first staff contains the main melody with first and second endings and various section markers (A... B... C... etc.). The second and third staves provide accompaniment. The piece concludes with a double bar line and repeat dots.

## 24017. OLD DANCE TUNE FRAGMENT (V)

(Strosnider, V, 1930s, B.)

Musical score for 24017. OLD DANCE TUNE FRAGMENT (V) in G major, 4/4 time. The score consists of one staff. The piece is a fragment of a larger tune, indicated by the title and the presence of a fermata over a note. It concludes with a double bar line and repeat dots.

**24018. OLD REEL (V)**

(Strosnider, V, 1930s, B.)

Musical score for 24018. OLD REEL (V) in G major, 4/4 time. The score consists of four staves. The first staff has a triplet of eighth notes at the beginning. The second staff has a fermata over a note. The third staff has a section labeled 'A..'. The fourth staff is labeled 'Var. A' and shows a variation of the first few notes.

**24019. YANKEE DOODLE (FV)**

(Mt. Pleasant Tablatures, 1950s, JB.)

Musical score for 24019. YANKEE DOODLE (FV) in G major, 4/4 time. The score consists of two staves. The melody is a simple, rhythmic tune.

**25020. OLD DANCE FV)**

(Strosnider, V, 19302, B.)

Musical score for 25020. OLD DANCE FV) in G major, 2/4 time. The score consists of four staves. The first staff has a section labeled 'A..' and 'B...'. The second staff is labeled 'Swift'. The third staff has a section labeled 'C..'. The fourth staff has three variations labeled 'Var. A', 'B', and 'C'.

**25021. SAILING DOWN THE RIVER ON THE O-HI-O (V)**

(Strosnider, V, A. 19302, B., C..)

Musical score for 25021. SAILING DOWN THE RIVER ON THE O-HI-O (V) in G major, 4/4 time. The score consists of two staves. The first staff has a section labeled 'A..' and 'B..' and 'C..'. The second staff has three variations labeled 'Var. A', 'B', and 'C'.

The player knew these words:

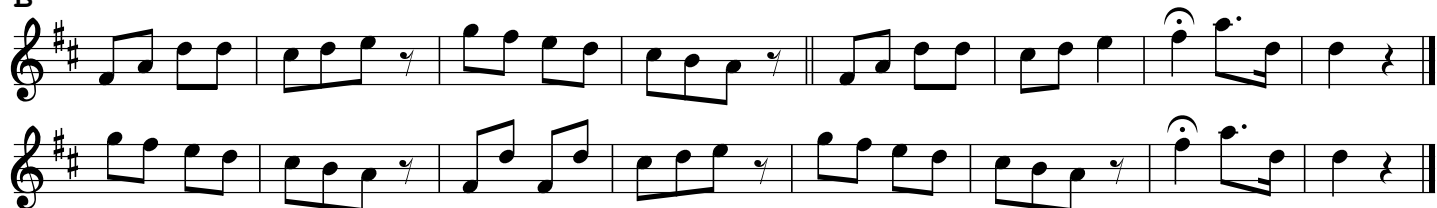
The boatmen whistle and the boatmen sing,  
and the boatmen tell me some good thing.  
Way, oh, boatmen row,  
Sailing down the river on the O-hi-o.

**26022. GENERAL BRADDOCK'S MARCH (F)**

(Mount Pleasant Tablatures, 1950s, JB.)

**A**

An untitled version.

**B**

Familiar-sounding, but elusive. It may possibly derive from a popular song, or a country dance, or -- as seems more likely -- a camp-meeting spiritual, once well known in southwestern Pennsylvania, with a chorus of:

Praise the Lord, O my soul, Glory, hallelujah!

Praise the Lord, O my soul, Praise ye the Lord!

**27023. MOTHER SAYS I MUSTN'T (V)**

(Strosnider, V, 1929, B.)

**27024. WASHINGTON FUNERAL DIRGE (F)**

(Mount Pleasant Tablatures, 1950s, JB.)

**27025. STORMSTOWN (F)**

(McKivison, V, 1930. B.)

Name of a village in Centre county.



### 28026. Port's Tune

(Reed, V, 1930s, B.)

Musical score for 28026. Port's Tune, featuring a treble clef, key signature of one sharp (F#), and 4/4 time signature. The score consists of three staves. The first staff contains the main melody with a section labeled 'A..'. The second staff provides a bass line accompaniment. The third staff is a variation labeled 'Var. A'.

### 28027. OLD DANCE

(Reed, V, 1930s, B.)

Musical score for 28027. OLD DANCE, featuring a treble clef, key signature of one sharp (F#), and 2/4 time signature. The score consists of two staves. The first staff contains the main melody with a fermata over the first measure. The second staff provides a bass line accompaniment.

### 29028. PIECE COMPOSED BY SYLVESKY VARNER (V)

(Losch, V, 1930s, B.)

Musical score for 29028. PIECE COMPOSED BY SYLVESKY VARNER (V), featuring a treble clef, key signature of one sharp (F#), and 4/4 time signature. The score consists of two staves. The first staff contains the main melody with several rests. The second staff provides a bass line accompaniment.

### 29029. SUNDAY AFTERNOON

(Losch, V, 1930s, B.)

Musical score for 29029. SUNDAY AFTERNOON, featuring a treble clef, key signature of one sharp (F#), and 4/4 time signature. The score consists of three staves. The first staff contains the main melody with sections labeled 'A....', 'B....', and 'C.....'. The second staff provides a bass line accompaniment with first and second endings. The third staff is a variation labeled 'Var. A' with sections 'B' and 'C'.

**29030. HOPPLE'S REEL (V)**

(Losch, V, 1930s, B.)

Musical score for Hopple's Reel (V) in G major, 4/4 time. The score consists of four staves. The first three staves contain the main melody with various ornaments and a triplet. The fourth staff is labeled 'Var. A' and shows a variation of the melody. The piece concludes with a double bar line and a repeat sign.

Play 2d pt. 4 times.

**30031. SQUARE DANCE (V)**

(Losch, V, 1930s, B.)

Musical score for Square Dance (V) in G major, 4/4 time. The score consists of four staves. The first three staves contain the main melody with sections labeled A..., B..., C..., and D.. The fourth staff is labeled 'Var.' and contains four variations labeled A, B, C, and D. The piece concludes with a double bar line.

**30032. BOB RIDDEO or BOB RIDDLEY (F)**

(Mount Pleasant Tablatures, 1950s, B.)

Musical score for Bob Riddeo or Bob Riddley (F) in G major, 2/4 time. The score consists of two staves. The first staff contains the main melody, and the second staff contains a variation. The piece concludes with a double bar line.

**31033. FRENCH FOURS (V)**

(Losch, V, 1930s, B.)

Musical score for French Fours (V) in G major, 4/4 time. The score consists of two staves. The first staff contains the main melody with sections labeled A... and a triplet. The second staff contains a variation labeled 'Var. A' and also includes a triplet. The piece concludes with a double bar line.

### 31034. COTILLION [sic] (V)

(Losch, V, 1930s, B.)

Learned from a black man.

Musical score for Cotillion [sic] (V) in 4/4 time. The score consists of four staves. The first staff is the melody, featuring a triplet of eighth notes in the first measure and a triplet of eighth notes in the fourth measure. The second staff is the accompaniment, starting with a sharp sign (#) above the first measure. The third and fourth staves provide further accompaniment, with a triplet of eighth notes in the fourth measure of the fourth staff.

Looks like the worn-down remnant of some Irish or Scottish reel tune. One can see some resemblance<sup>3</sup> between this melody and One Thousand, p.25, 5th.

### 31035. STRAIGHT FOURS

(Losch, V, 1930s, B.)

Musical score for Straight Fours in 4/4 time. The score consists of two staves. The first staff is the melody, featuring a triplet of eighth notes in the first measure and a triplet of eighth notes in the fourth measure. The second staff is the accompaniment, featuring a triplet of eighth notes in the first measure and a triplet of eighth notes in the fourth measure. The score includes section markers A..., B..., C..., and Var. A, B, C.

### 32031. OLD REEL

(Strosnider, V, 1930s, B.)

Musical score for Old Reel in 4/4 time. The score consists of two staves. The first staff is the melody, featuring a triplet of eighth notes in the first measure and a triplet of eighth notes in the fourth measure. The second staff is the accompaniment, featuring a triplet of eighth notes in the first measure and a triplet of eighth notes in the fourth measure. The score includes section markers A..., B....., and Var. A, B.

### 36047. Maria Morris Tune (V)

(I. Morris, V, 1930s, B.)

Musical score for Maria Morris Tune (V) in 4/4 time. The score consists of three staves. The first staff is the melody, featuring a triplet of eighth notes in the first measure and a triplet of eighth notes in the fourth measure. The second and third staves are the accompaniment, featuring a triplet of eighth notes in the first measure and a triplet of eighth notes in the fourth measure.

Named for a woman who liked it.

### 36048. MOUNT PLEASANT QUICKSTEP (F)

(Mount Pleasant Tablatures, 1950s, JB.)

Two efforts to restore this tune's proper time.

1st .

2nd .

### 36049. LITTLE SHOES (V)

(I. Morris, V, 1930s, B.)

### 277. ROUND UP THE YEARLINGS [I] (V)

(Queer, V, 1946, B.)

Learned from the Nashville, Tenn., radio.

### 277. ROUND UP THE YEARLINGS [I] (V)

(Queer, V, 1946, B.)

Learned from the Nashville, Tenn., radio.

### 277. ROUND UP THE YEARLINGS [I] (V)

(S. Hail, V, 1930s, B.)

Learned along the Mason-Dixon Line.

### 277. ROUND UP THE YEARLINGS [I] (V)

(S. Hail, V, 1930s, B.)

Learned along the Mason-Dixon Line.

### 278. ROUND UP THE YEARLINGS [II] (V)

(Boden, V, 1957, JB.)

\* The e notes look like whole notes; it's not obvious what this means.

### 278. ROUND UP THE YEARLINGS [II] (V)

(Boden, V, 1957, JB.)

\* The e notes look like whole notes; it's not obvious what this means.

### 590041. OLD SET DANCE, Part of The Lancers (V)

(Simmons, V, 1941, B.)

### 590042. JIG (V)

(Simmons, V, 1930s, B.)

### 590043. COCK OF THE EAST AND WEST (V)

(Simmons, V, 1930s, B.)

# 591044. The QUEEN'S MARRIAGE (V)

Orange and Blue

(Simmons, V, 1930s, B.)

Main musical notation for 'The Queen's Marriage (V)'. It consists of four staves of music in G major and 6/8 time. The notation includes various rhythmic patterns and melodic lines. Above the first staff are labels A... B... C... D... and above the second staff are E... (^) F... Above the third staff are (^) G... H... I... J... and above the fourth staff are (^) K... L... The piece concludes with a double bar line.

"(^)" represents the up-arrow decoration used in this tune, whatever it means.

Variation musical notation for 'The Queen's Marriage (V)'. It consists of two staves of music in G major. The first staff contains variations labeled Var.A, B, C, C, D, E, F, G, G, H. The second staff contains variations labeled I, J, K, L. Each variation is a short melodic phrase.